



**SCHACH**<sup>TM</sup>  
**ENGINEERS**  
SETTING HIGHEST STANDARD OF SAFETY TO WORK AT HEIGHT

# SETTING HIGHEST STANDARD OF SAFETY TO WORK AT HEIGHT

## ● MS FORMWORK



ISO 9001:2015



For more information  
**+91 7428290741**

Visit our website

**WWW.SCHACHENGINEERS.COM**





# ABOUT US:

We, SCHACH ENGINEERS, are leading player in Scaffolding, Formwork, AWP's, Ladder and PPE's.  
We are ISO/IEC 17021-1:2015 TUV Nord certified company.

Our product range includes:

## SCAFFOLDING

- Steel Scaffolding (Cup-lock, Ring-lock, H Frames, Pipe & Couplers and Customized Solution)
- Aluminium Scaffolding (Narrow Width, Double Width and Customized Solution)
- FRP Scaffolding

## FORMWORK

- Aluminium Formwork
- MS Formwork
- Ancillary Components

## AWP's, LADDERS and PPE's

- Boom Lifts, Scissor Lifts, Personal Lifts and Spider Lifts
- Various types of Regular and Customized Aluminium and FRP Ladders
- Personal Protective Equipment

We are Proudly engaged into:

- Sales
- Rental
- Design, Planning and Customization
- Safety Training
- Troubleshoot & Support



We are young & dynamic management, technical and sales team, equipped with required set of skills, expertise and experience of more than 15 years. This helps us to carry out a detailed site survey to provide the most suitable products for required applications thus ensuring that work is carried out quickly, safely and economically. We have brought the best output driven Work at Height solution products conforming to

European standards for the Worldwide market.

All our materials meet the growing challenges of maintaining strict quality standards which are necessary to ensure reliability, durability and of course safety. This has made us an utmost preferred vendor for 'Work at Height' solutions in India with zero tolerance to accidents at work site.

Our detailed design, planning, cost control facility, safety standards and market intelligence nurture satisfaction of the customer which enrich business repetition and long-term collaboration.

## **Our Mission:**

**SCHACH ENGINEERS aims to serve best safety solutions to our clients around the world.**

We believe in innovating and adopting technological advancements to provide the best solutions for safety in 'Work at Height'. We are delighted to make the problems of 'Work at Height' easy for our customers.

## **Our Vision:**

**To be the first choice in being 'Work at Height' Solution provider across the Globe.**

We at SCHACH ENGINEERS are committed to set the highest standard of safety in 'Work at Height' Solutions promoting us to be leader in this category.

A photograph of a city skyline at dusk or night. The sky is a deep blue with some clouds. The city lights are on, and a bridge is visible in the foreground on the right side. The text is overlaid on the right side of the image.

**Setting Highest Standard  
of Safety to work at Height.**



**SCHACH  
ENGINEERS**

# MS FORMWORK

WWW.SCHACHENGINEERS.COM



1

## MS Formwork Straight Panel

Product Code	Specification	Width
SS-G-MSP625	MS Straight Panel 625mmW	625
SS-G-MSP600	MS Straight Panel 600mmW	600
SS-G-MSP550	MS Straight Panel 550mmW	550
SS-G-MSP500	MS Straight Panel 500mmW	500
SS-G-MSP450	MS Straight Panel 450mmW	450
SS-G-MSP400	MS Straight Panel 400mmW	400
SS-G-MSP350	MS Straight Panel 350mmW	350
SS-G-MSP300	MS Straight Panel 300mmW	300
SS-G-MSP250	MS Straight Panel 250mmW	250
SS-G-MSP200	MS Straight Panel 200mmW	200
SS-G-MSP150	MS Straight Panel 150mmW	150
SS-G-MSP100	MS Soldier Panel 100mmW	100

2

## MS Soldier Panel With Channel Section



Product Code	Specification	Width
SS-G-MSPWCS100	MS Soldier Panel 100mm with Channel Section	100

3

## MS Internal Corner Panel



Product Code	Specification	Width	Length
SS-G-MICP300x300	MS Internal Corner Panel 300mm x 300mm	300	300
SS-G-MICP250x250	MS Internal Corner Panel 250mm x 250mm	250	250
SS-G-MICP200x200	MS Internal Corner Panel 200mm x 200mm	200	200
SS-G-MICP150x150	MS Internal Corner Panel 150mm x 150mm	150	150
SS-G-MICP100x100	MS Internal Corner Panel 100mm x 100mm	100	100

NOTE :

1. All dimension are in mm.

2. All images are for representation, Actual finishes may vary.





**SCHACH  
ENGINEERS**

**MS FORMWORK**

WWW.SCHACHENGINEERS.COM



4

#### Product G.4 - MS External Angle

Product Code	Specification	Width	Length
SS-G-MEA65x65	MS External Angle 65 x 65mm	65	65
SS-G-MEA50x50	MS External Angle 50 x 50mm	50	50

5

#### MS Starter Panel

Product Code	Specification	Height
SS-G-MSP100	MS Starter Panel 100mm H	100
SS-G-MSP150	MS Starter Panel 150mm H	150

6

#### MS Round panel

Product Code	Specification	Dia
SS-G-MRp300	MS Round panel R300mm	300
SS-G-MRp250	MS Round panel R250mm	250
SS-G-MRp200	MS Round panel R200mm	200
SS-G-MRp150	MS Round panel R150mm	150

7

#### MS Curvature Panel

Product Code	Specification	Dia
SS-G-MCP	MS Curvature Panel ( Customized )	0

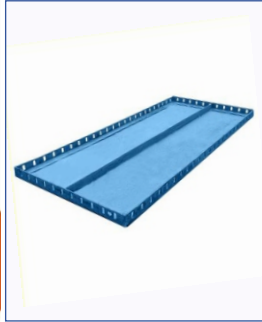
NOTE :

1. All dimension are in mm.
2. All images are for representation, Actual finishes may vary.



**SCHACH  
ENGINEERS**

**MS FORMWORK**



WWW.SCHACHENGINEERS.COM

8

### Centering/ Shuttering Plate

Product Code	Specification	Width	Length
SS-G-CSP300x450	Centering/ Shuttering Plate 0.3 x 0.45 (1.0ft x 1.5ft)	300	450
SS-G-CSP300x600	Centering/ Shuttering Plate 0.3 x 0.6 (1.0ft x 2.0ft)	300	600
SS-G-CSP300x900	Centering/ Shuttering Plate 0.3 x 0.9 (1.0ft x 3.0ft)	300	900
SS-G-CSP300x1200	Centering/ Shuttering Plate 0.3 x 1.2 (1.0ft x 4.0ft)	300	1200
SS-G-CSP600x450	Centering/ Shuttering Plate 0.6 x 0.45 (2.0ft x 1.5ft)	600	450
SS-G-CSP600x600	Centering/ Shuttering Plate 0.6 x 0.6 (2.0ft x 2.0ft)	600	600
SS-G-CSP600x900	Centering/ Shuttering Plate 0.6 x 0.9 (2.0ft x 3.0ft)	600	900
SS-G-CSP600x1200	Centering/ Shuttering Plate 0.6 x 1.2 (2.0ft x 4.0ft)	600	1200
SS-G-CSP900x900	Centering/ Shuttering Plate 0.9 x 0.9(3.0ft x 3.0ft)	900	900
SS-G-CSP900x1200	Centering/ Shuttering Plate 0.9 x 1.2 (3.0ft x 4.0ft)	900	1200
SS-G-CSP1200x1200	Centering/ Shuttering Plate 1.2 x 1.2 (4.0ft x 4.0ft)	1200	1200

9

### Wooden Panel Components

Product Code	Specification
SS-G-WPC	Wooden Panel Components

10

### Ply

Product Code	Specification	Thk	Width	Length
SS-G-P121220x2440	Ply 12mm x 1.22mtr (4ft) x 2.44mtr (8ft)	12	1220	2440
SS-G-P181220x2440	Ply 18mm x 1.22mtr (4ft) x 2.44mtr (8ft)	18	1220	2440

11

### H20 Beam

Product Code	Specification	Length
SS-G-HB1200	H20 Beam 1.2mtr	1200
SS-G-HB1500	H20 Beam 1.5mtr	1500
SS-G-HB2000	H20 Beam 2.0mtr	2000
SS-G-HB2400	H20 Beam 2.4mtr	2400
SS-G-HB3600	H20 Beam 3.6mtr	3600

NOTE :

1. All dimension are in mm.

2. All images are for representation, Actual finishes may vary.





**SCHACH  
ENGINEERS**

**MS FORMWORK**

WWW.SCHACHENGINEERS.COM



**12**

**H16 Beam**

Product Code	Specification	Length
SS-G-HB1000	H16 Beam 1.0mtr	1000
SS-G-HB1200	H16 Beam 1.2mtr	1200
SS-G-HB1500	H16 Beam 1.5mtr	1500
SS-G-HB2000	H16 Beam 2.0mtr	2000
SS-G-HB2400	H16 Beam 2.4mtr	2400
SS-G-HB3600	H16 Beam 3.6mtr	3600

**13**

**Waller**



Product Code	Specification	Width	Length
SS-G-W100x500	Waller 100 x 0.5mtr	100	500
SS-G-W100x1000	Waller 100 x 1mtr	100	1000
SS-G-W100x1200	Waller 100x 1.22mtr	100	1200
SS-G-W100x1500	Waller 100x 1.5mtr	100	1500
SS-G-W100x1800	Waller 100 x 1.8mtr	100	1800
SS-G-W100x2000	Waller 100 x 2.0mtr	100	2000
SS-G-W100x2440	Waller 100 x 2.44mtr	100	2440
SS-G-W100x3000	Waller 100 x 3.0mtr	100	3000
SS-G-W75x500	Waller 75 x 0.5mtr	75	500
SS-G-W75x1000	Waller 75 x 1mtr	75	1000
SS-G-W75x1220	Waller 75x 1.22mtr	75	1220
SS-G-W75x1500	Waller 75x 1.5mtr	75	1500
SS-G-W75x1800	Waller 75 x 1.8mtr	75	1800
SS-G-W75x2000	Waller 75 x 2.0mtr	75	2000
SS-G-W75x2440	Waller 75 x 2.44mtr	75	2440
SS-G-W75x3000	Waller 75 x 3.0mtr	75	3000

**14**

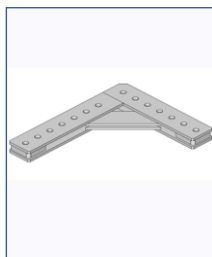
**Waller Straight Connector**



Product Code	Specification
SS-G-WSC	Waller Straight Connector

**15**

**Waller Right Angle Connector**



Product Code	Specification
SS-G-WRAC	Waller Right Angle Connector

**NOTE :**

1. All dimension are in mm.
2. All images are for representation, Actual finishes may vary.



**SCHACH  
ENGINEERS**

**MS FORMWORK**

WWW.SCHACHENGINEERS.COM



16

### Waller Diagonal Assembly

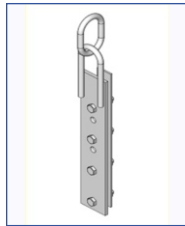
Product Code	Specification
SS-G-WDA	Waller Diagonal Assembly



17

### Claw Assembly for Hbeam & Waller

Product Code	Specification
SS-G-CAH&W	Claw Assembly for Hbeam & Waller



18

### Hbeam Lift Hook

Product Code	Specification
SS-G-HLH	Hbeam Lift Hook



19

### Hbeam Connector

Product Code	Specification
SS-G-HC	Hbeam Connector

**NOTE :**

1. All dimension are in mm.
2. All images are for representation, Actual finishes may vary.





**SCHACH  
ENGINEERS**

**MS FORMWORK**

WWW.SCHACHENGINEERS.COM



**20**

**Pin Bolt & Wedge**

Product Code	Specification
SS-G-PB&W	Pin Bolt & Wedge 16mm Dia x 50mm



**21**

**Single Clip**

Product Code	Specification
SS-G-SC	Single Clip for 40NB Pipe



**22**

**Double Clip**

Product Code	Specification
SS-G-DC	Double Clip for Channel



**23**

**Props Outer**

Product Code	Specification	Height	Length
SS-G-PO500x500	Props Outer 0.5mtr + Inner 0.5mtr	500	500
SS-G-PO600x600	Props Outer 0.6mtr + Inner 0.6mtr	600	600
SS-G-PO500x750	Props Outer 0.5mtr + Inner 0.75mtr	500	750
SS-G-PO500x1000	Props Outer 0.5mtr + Inner 1.0mtr	500	1000
SS-G-PO1000x1000	Props Outer 1.0mtr + Inner 1.0mtr	1000	1000
SS-G-PO1000x1500	Props Outer 1.0mtr + Inner 1.5mtr	1000	1500
SS-G-PO1500x1500	Props Outer 1.5mtr + Inner 1.5mtr	1500	1500
SS-G-PO1500x2000	Props Outer 1.5mtr + Inner 2.0mtr	1500	2000
SS-G-PO1500x2500	Props Outer 1.5mtr + Inner 2.5mtr	1500	2500
SS-G-PO1500x3000	Props Outer 1.5mtr + Inner 3.0mtr	1500	3000
SS-G-PO2000x2000	Props Outer 2.0mtr + Inner 2.0mtr	2000	2000
SS-G-PO2000x2500	Props Outer 2.0mtr + Inner 2.5mtr	2000	2500
SS-G-PO2000x3000	Props Outer 2.0mtr + Inner 3.0mtr	2000	3000
SS-G-PO2500x2500	Props Outer 2.5mtr + Inner 2.5mtr	2500	2500
SS-G-PO2500x3000	Props Outer 2.5mtr + Inner 3.0mtr	2500	3000
SS-G-PO3000x3000	Props Outer 3.0mtr + Inner 3.0mtr	3000	3000

**NOTE :**

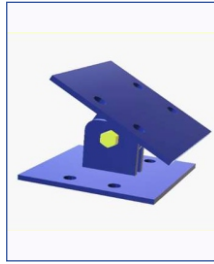
1. All dimension are in mm.
2. All images are for representation, Actual finishes may vary.



**SCHACH  
ENGINEERS**

**MS FORMWORK**

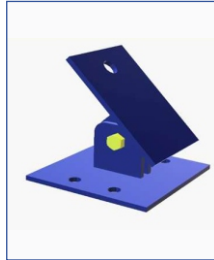
WWW.SCHACHENGINEERS.COM



**24**

### Foot Adopter

Product Code	Specification
SS-G-FA	Foot Adopter with Nut & Bolt



**25**

### Top Adopter

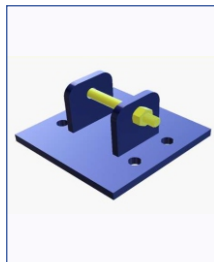
Product Code	Specification
SS-G-TA	Top Adopter with Nut & Bolt



**26**

### Heavyduty Top Hinge Adopter

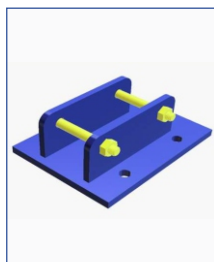
Product Code	Specification
SS-G-HTHA	Heavy duty Top Adopter(with Nut& bolt)



**27**

### Heavy Duty Foot Hing Adopter

Product Code	Specification
SS-G-HDFHA	Foot Hing Adopter



**28**

### Heavy Duty Double Foot Hing Adopter

Product Code	Specification
SS-G-HDDFHA	Double Foot Hing Adopter

**NOTE :**

1. All dimension are in mm.
2. All images are for representation, Actual finishes may vary.





**SCHACH  
ENGINEERS**

**MS FORMWORK**

WWW.SCHACHENGINEERS.COM



**29**

### Turn Buckle

Product Code	Specification	Height	Length
SS-G-TB500x900	Turn Buckle 0.5mtr to 0.9mtr	500	900
SS-G-TB1100x1500	Turn Buckle 1.1mtr to 1.5mtr	1100	1500
SS-G-TB1600x2000	Turn Buckle 1.6mtr to 2.0mtr	1600	2000
SS-G-TB2100x2500	Turn Buckle 2.1mtr to 2.5mtr	2100	2500
SS-G-TB2600x3000	Turn Buckle 2.6mtr to 3.0mtr	2600	3000
SS-G-TB3100x3500	Turn Buckle 3.1mtr to 3.5mtr	3100	3500

**30**

### Tie Rod

Product Code	Specification	Dia	Length
SS-G-TR16x500	Tie Rod Dia 16mm x 0.5mtr	16	500
SS-G-TR16x600	Tie Rod Dia 16mm x 0.6mtr	16	600
SS-G-TR16x750	Tie Rod Dia 16mm x 0.75mtr	16	750
SS-G-TR16x1000	Tie Rod Dia 16mm x 1mtr	16	1000
SS-G-TR16x1200	Tie Rod Dia 16mm x 1.2mtr	16	1200
SS-G-TR16x1500	Tie Rod Dia 16mm x 1.5mtr	16	1500
SS-G-TR16x2000	Tie Rod Dia 16mm x 2.0mtr	16	2000
SS-G-TR16x3000	Tie Rod Dia 16mm x 3mtr	16	3000
SS-G-TR16x6000	Tie Rod Dia 16mm x 6mtr	16	6000

**31**

### Wing Nut

Product Code	Specification
SS-G-WN	Wing Nut

**32**

### Disc/ Anchor Nut

Product Code	Specification
SS-G-DAN	Disc/ Anchor Nut

**NOTE :**

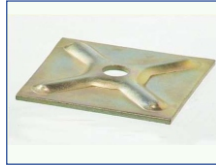
1. All dimension are in mm.
2. All images are for representation, Actual finishes may vary.



**SCHACH  
ENGINEERS**

**MS FORMWORK**

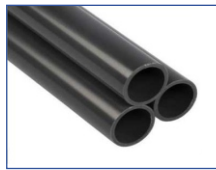
WWW.SCHACHENGINEERS.COM



**33**

**Washer Plate**

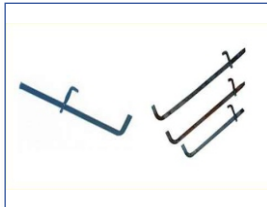
Product Code	Specification	Thk	Width	Length
SS-G-WP6x100x100	Washer Plate 100 x 100 x 6mm thk	6	100	100
SS-G-WP4x100x100	Washer Plate 100 x 100 x 4mm thk	4	100	100



**34**

**PVC Pipe**

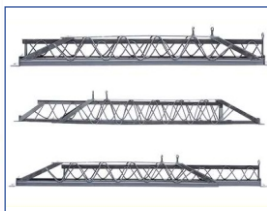
Product Code	Specification	Dia	Length
SS-G-PP25x500	PVC Pipe 25mm x 0.5mtr	25	500
SS-G-PP25x1000	PVC Pipe 25mm x 1mtr	25	1000
SS-G-PP25x2000	PVC Pipe 25mm x 2mtr	25	2000
SS-G-PP25x3000	PVC Pipe 25mm x 3mtr	25	3000
SS-G-PP25x6000	PVC Pipe 25mm x 6mtr	25	6000



**35**

**Shikanja**

Product Code	Specification	Length
SS-G-S600	Shikanja 2ft	600
SS-G-S900	Shikanja 3ft	900
SS-G-S1200	Shikanja 4ft	1200
SS-G-S1500	Shikanja 5ft	1500



**36**

**Acro Span**

Product Code	Specification	Width	Length
SS-G-AS1000x1000	Acro Span 1.0mtr x 1.0mtr	1000	1000
SS-G-AS1200x1200	Acro Span 1.2mtr x 1.2mtr	1200	1200
SS-G-AS1500x1500	Acro Span 1.5mtr x 1.5mtr	1500	1500
SS-G-AS2000x2000	Acro Span 2.0mtr x 2.0mtr	2000	2000
SS-G-AS2500x2500	Acro Span 2.0mtr x 2.5mtr	2500	2500
SS-G-AS2500x2500	Acro Span 2.5mtr x 2.5mtr	2500	2500

**NOTE :**

1. All dimension are in mm.
2. All images are for representation, Actual finishes may vary.



**WHAT OUR  
CUSTOMERS ARE  
SAYING**

---





**SCHACH  
ENGINEERS**

Site we have ensured safety to work at height

WWW.SCHACHENGINEERS.COM

# OUR CLIENTS



British Embassy



IndianOil



KANPUR METRO RAIL CORPORATION

महा मेट्रो



PUNE METRO

महा मेट्रो



NAGPUR METRO



LUCKNOW METRO RAIL CORPORATION



NOIDA METRO  
Noida Metro Rail Corporation Ltd.



The mall with infinite experiences



PHOENIX MARKETCITY



oberoi mall  
FUN - FOOD - FASHION - FILMS



MMRC



Kempegowda  
INTERNATIONAL AIRPORT  
BENGALURU





**SCHACH**  
ENGINEERS

Site we have ensured safety to work at height

WWW.SCHACHENGINEERS.COM

## OUR CLIENTS

accenture

Flipkart



BOSCH



GAR

ESSAR

amazon



oppo

DLFA



Come Live an Inorbit Experience



PEPSICO

J.P.Morgan

SANOFI

OBEROI  
REALTY

LODHA  
BUILDING A BETTER LIFE

MARUTI  
SUZUKI

Abbott

Chhatrapati Shivaji  
International Airport

JLL

Pfizer

HONDA

Shapoorji Pallonji

H&M



• Delhi NCR • Mumbai • Bangalore • Kolkata • Chennai • Hyderabad • Pune • Lucknow • Coimbatore

**Corporate Office**

A-201, Hariom Plaza, MG Road,  
Sukarwadi , Borivali (East)  
Mumbai - 400 066

**Registered Office**

G-401, AVJ heights,  
Sector Zeta 1,  
Greater Noida -201 306.

Mobile : 91 74282 90741

Email : [info@schachengineers.com](mailto:info@schachengineers.com)

[www.schachengineers.com](http://www.schachengineers.com)



For more information  
**+91 7428290741**

Visit our website

**WWW.SCHACHENGINEERS.COM**

